

Verysoft  Верисофт

AllProxy User's Manual



Contents

Table of Contents	1
About this documentation	1
Document revision history	1
Disclaimer	1
Support & product feedback	1
Contact	1
Introduction	2
Basic features	2
Getting started	2
Quick-start	3
How does it work?	5
AllProxy Application's Compatibility	5
Compatibility with 3rd party applications	6
Installation and Uninstallation of the AllProxy	6
AllProxy software installation process	6
AllProxy software uninstallation process	7
Working Principles	7
Application Functional Management	8
Proxy server managing	8
Adding new proxy server	9
Testing proxy server	11
Proxification rules managing	11
Adding rules	12
Editing rules	13
Deleting rules	13
Changing priority	13
Setting Remote Addresses	14
Columns customization	15
Default proxy	16
Forced proxification	17
Settings Management	18
Control menu	18
Settings	19
Main tab	19
View tab	20
Log tab	20
Advanced mode	21
Indications and Notations	23
AllProxy Tray pop-up notification	23
Trial Mode Limitations	24

How to	24
How to add new proxy?	24
How to add new rule for all applications?	25
How to add new remote destination address for my browser?	26
How to set exception from proxification?	27
How to block applications?	29
How to deny changing configuration to Windows User?	30
Firewall Compatibility	32
Troubleshooting	33
Can't transfer files	33
Can't enter FTP server	33
Can't speak through VoIP	33
Nod32 compatibility	33
Broken network connection	33
License key was not added to registry	34
Unable to fix network configuration	34
AllProxy End User License Agreement	34



Table of Contents

About this documentation

Copyright © 2004-2011 Verysoft, LLC. All rights reserved.

E-mails: contact@very-soft.com, support@very-soft.com

Web: <http://very-soft.com>

No part of this material may be reproduced or transmitted in any form or by any means or used to make any derivative work without express written consent from the copyright holders.

Document revision history

2009-12-30,1.0	Initial documentation release for AllProxy software.
2010-03-30,1.1	Updated copyright. Editorial corrections made.
2010-05-28,1.5	Pictures updated. Editorial corrections made.
2011-01-17,1.9	Updated copyright. Pictures updated. New features description added.
2011-09-20,2.0	Pictures updated. New features description added.
2011-11-11,2.1	New pictures added. New features description added.

Disclaimer

Verysoft, LLC makes no warranty for the use of its products, other than those expressly contained in the Company's standard warranty which is detailed in the Terms and Conditions located on the Company's Website. The Company assumes no responsibility for any errors which may appear in this document, reserves the right to change devices or specifications detailed herein at any time without notice, and does not make any commitment to update the information contained herein. According to the license agreement which text you can find in the [AllProxy End User License Agreement](#) chapter, AllProxy application is distributed with "AS IS" principle.

Support & product feedback

We provide an electronic support and feedback system for our Verysoft products. It can be accessed through the following web link: <http://very-soft.com>

Your feedback and comments are always welcome! It helps improving this product!

Contact

For further information about the AllProxy product or this document please contact us at:

Verysoft, LLC

Website: <http://very-soft.com>

Contact: contact@very-soft.com

Support: support@very-soft.com



Introduction

We appreciate your interest to the AllProxy application. The AllProxy was designed to redirect network connections in Windows OS platforms. So, you can easily adjust network exchange of your operating system in accordance with your requirements.

Basic features

- *cli* support
- IPv4 and IPv6 protocols support
- Compatible with next proxy server types: HTTP, HTTP-WEB, SOCKS v.4, SOCKS v.5
- Single click proxy testing opportunity
- Specifying rules for Windows Users&Groups
- Forced proxification for applications
- Quick setup for redirecting all programs
- Specifying remote hosts in rules (IP, DNS)
- Rules priority support
- Proxy server types auto-detection
- Basic and digest proxy authentication for HTTP proxies support
- Multi-language interface
- Intuitively clear interface

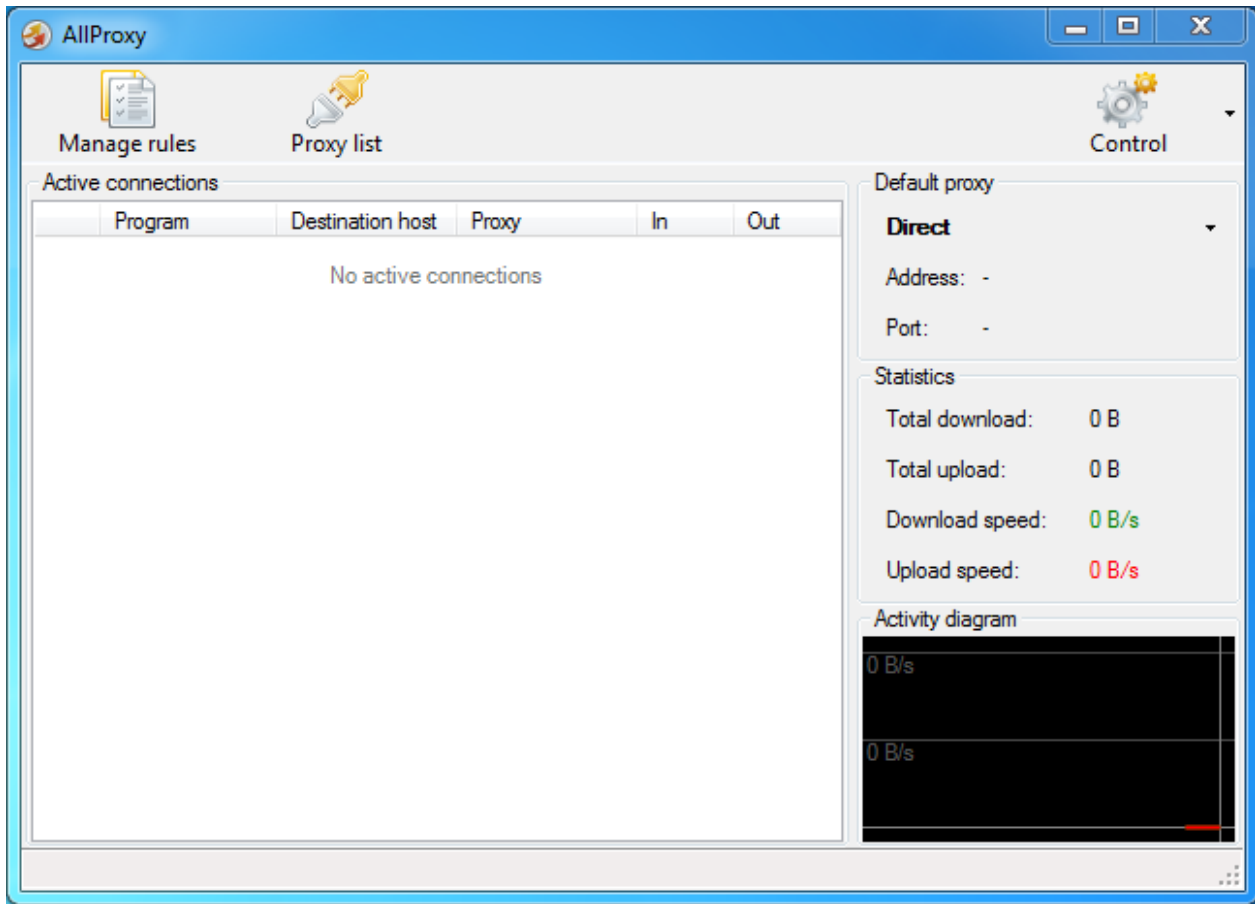


Note

Future releases of the AllProxy will be updated with new features. As usual we taking into consideration your critical reviews and ideas to make our software products better and suit your needs.

Getting started

When you launch the AllProxy for the first time, a window like the following should come up:



On the top you can see three buttons:

- **Manage rules**

Open **Rule list** dialog window, where you can specify different rules to proxy applications.

- **Proxy list**

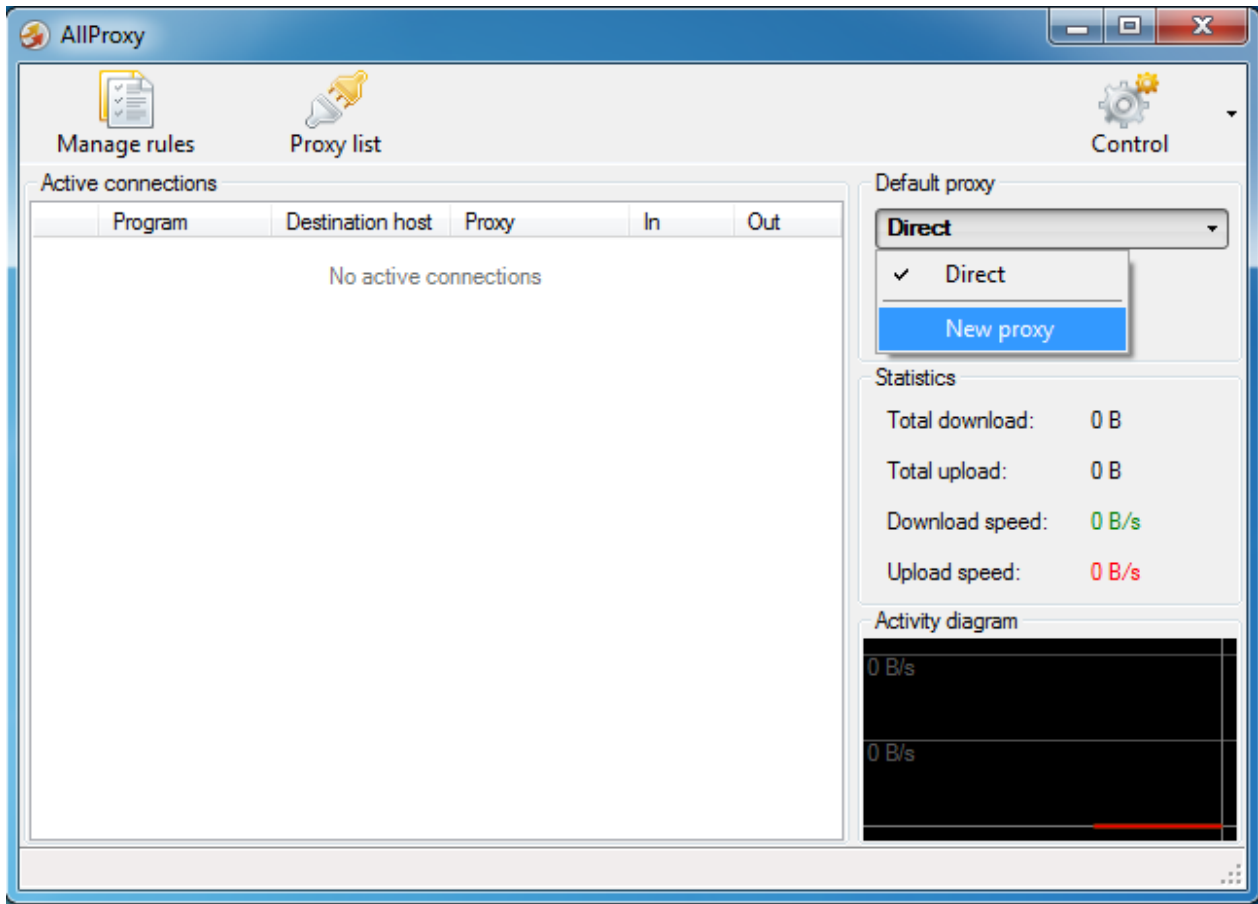
Open window with a list of proxy servers, where you can add your proxy servers. Since you have not created any, the list is empty.

- **Control**

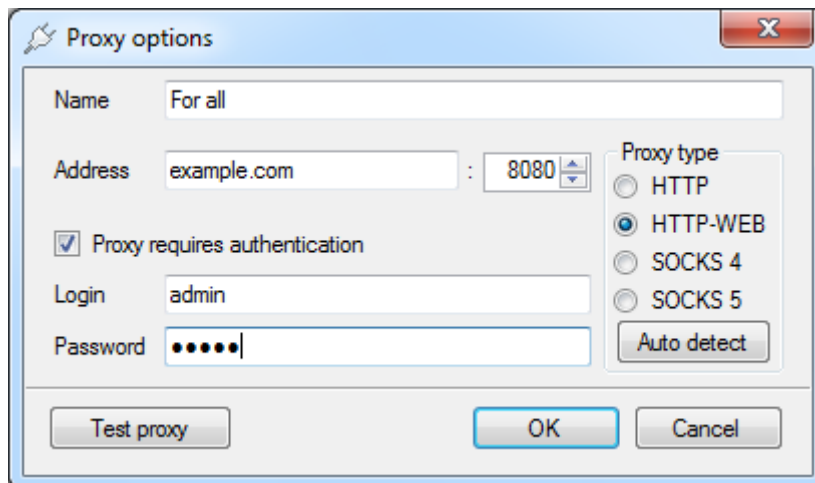
Open context menu with AllProxy settings.

Quick-start

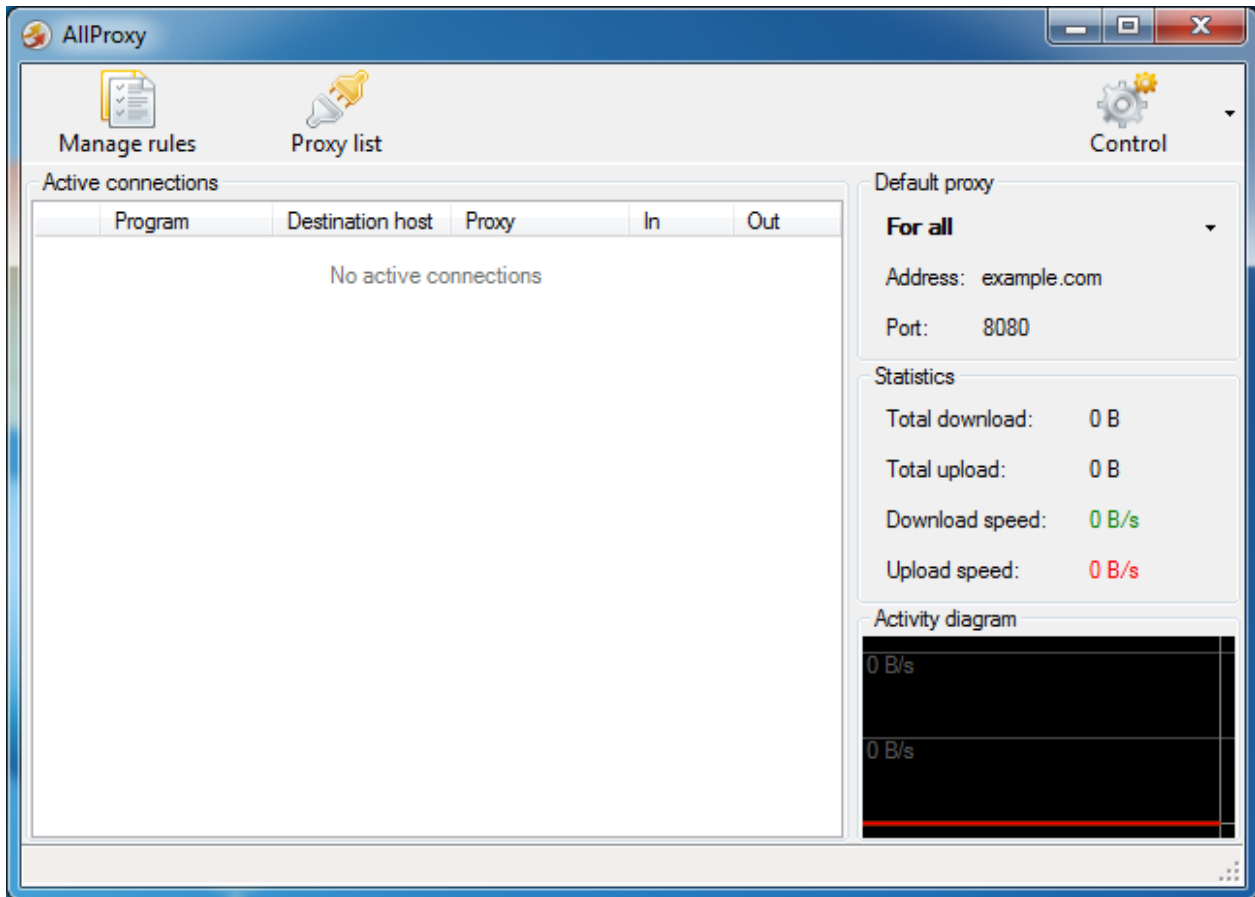
1. Click on **Direct** on the right side of the main window and select "New proxy" item.



2. In appeared dialog window specify name, IP address or DNS, port, type of the proxy server. If it is necessary, select "Proxy requires authentication" mark and enter your login and password.

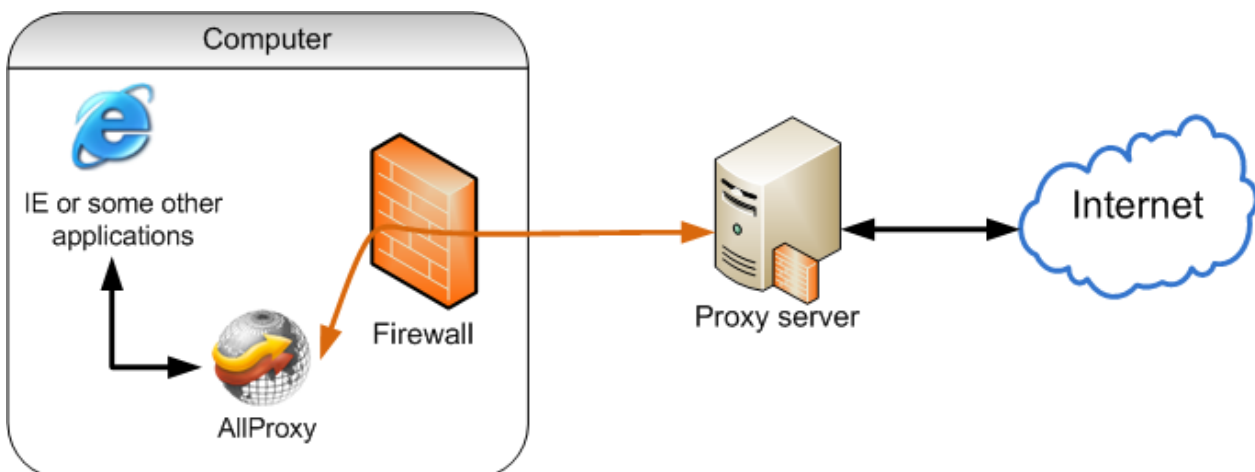


3. As a result, this created proxy will be set as default proxy and all your client applications will connect through the AllProxy to the specified proxy server, and then to the Internet.



How does it work?

Specified applications will establish their connections through AllProxy to the proxy server and then to the Internet.



AllProxy Application's Compatibility

Minimal computer requirements:

- Operating System: Windows XP/Vista/Windows 7 (32/64 bit);



- Installed Microsoft .Net Framework v2.0 and higher.



Warning

Listed data does not include requirements for Microsoft .Net Framework v2.0 or higher. If you don't have appropriate technical information about your software or hardware configuration, please refer to User Manuals of your device(s) or application(s).

Compatibility with 3rd party applications

Technical Engineers of Verysoft company tested compatibility with number of popular applications. AllProxy program is fully compatible with such software titles, as:

- Proxy-servers: WinGate, UserGate, Kerio WinRoute, FreeProxy, Squid, 3proxy;
- Internet browsers: Internet Explorer, Opera, Firefox, Chrome;
- Mail Clients: Microsoft Outlook, The Bat!, Mozilla Thunderbird;
- Download Managers: ReGet, Download Master, FlashGet;
- IM-clients: ICQ, Miranda, QIP, qutIM, mIRC, x-chat, KvIRC;
- VoIP-clients: Skype, X-Lite;
- Torrent-clients: uTorrent, BitTorrent, BitComet;
- P2P-clients: DC++, StrongDC++;
- Antivirus software and firewalls: Kaspersky AV, Dr.Web, NOD32, Comodo.



Note

It is far not a complete list of compatible titles, but it helps to understand that AllProxy is one of the most accessible, reliable and easy-to-use applications.

Installation and Uninstallation of the AllProxy

You can download AllProxy from the developer's official web-site: <http://very-soft.com/product/allproxy> or from web-resources of third party distributors.

AllProxy software installation process



Warning

Before installing the AllProxy, please remove other proxification programs from your computer, because AllProxy is not compatible with them!

To initiate setup process, execute installation binary file **AllProxy-setup.msi**, and answer on dialog questions.

If you have any troubles or errors during installation, please, refer to "Frequently asking questions and troubleshooting" section on the official web site.



Warning

Please, read carefully text of the [AllProxy End User License Agreement](#) which is displayed on the screen of your PC during installation process. If you are not agree with license conditions you must cancel the installation and delete all application copies and related materials from all available storages. You can mail all your complaints and orders for special licensing conditions to: support@very-soft.com

AllProxy software uninstallation process

Open **Control Panel** -> **Add or Remove Programs** or **Programs and Features** (in Windows 7) item. Select AllProxy item and click "Remove" button, answer on dialog questions.

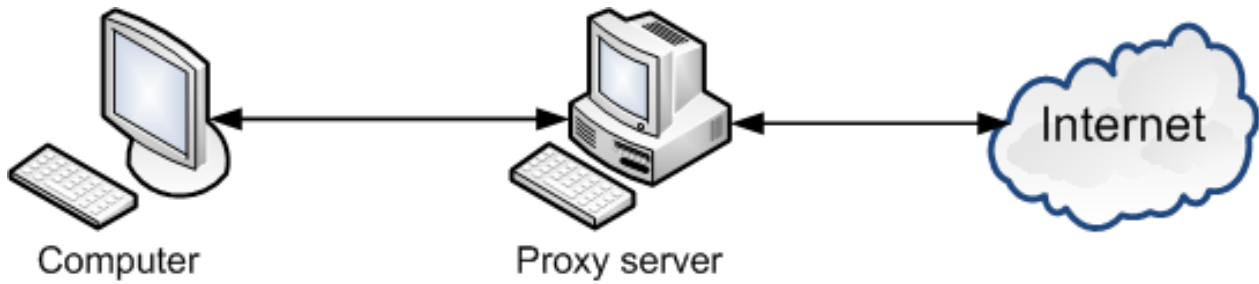


Warning

To avoid penetration of your PC by virus and other malicious software **DO NOT COPY OR INSTALL** applications hosted on **UNTRUSTED** web sites or sent to you by unknown identities. We recommend to download AllProxy and other Verysoft applications from the official web-site: <http://very-soft.com>

Working Principles

As was said, AllProxy was designed to redirect network connections through a proxy server.



Proxy server:

In computer networks, a proxy server is a server (a computer system or an application program) that acts as an intermediary for requests from clients seeking resources from other servers. A client connects to the proxy server, requesting some service, such as a file, connection, web page, or other resource, available from a different server. The proxy server evaluates the request according to its filtering rules.

Proxification:

Redirection of the network traffic through a proxy server on basis of some rules.

Rule:

Set of conditions under which the proxification will be performed.



Note

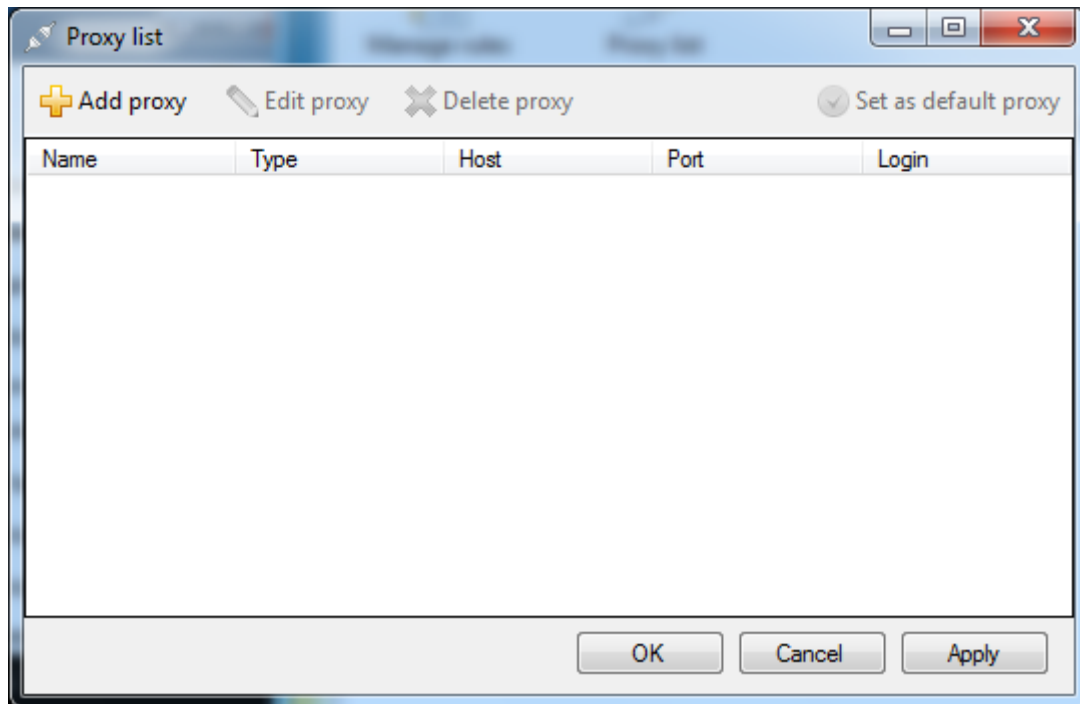
The AllProxy supports rules priority, this means that if the rule stands above another rule, it has more priority. The order matters!

Application Functional Management

Proxy server managing

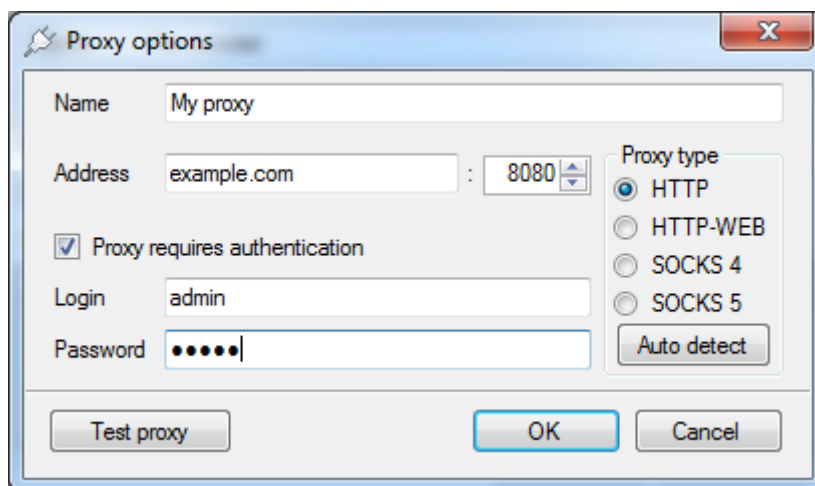
For operating instructions with a proxy server you need to know its type, address (IP or DNS), port number and optional parameters for access (login, password).

To manage proxies click "Proxy list" button on the main window. As a result the "Proxy list" dialog window is opened.



Adding new proxy server

1. Click "Add proxy".
2. In appeared dialog window specify name, IP address or DNS, port, type of the proxy server. If it is necessary, select "Proxy requires authentication" mark and enter your login and password.



**Note**

If you don't know type of the proxy server which you have specified, take advantage of "Auto detect" button.

3. After all modifications made press "OK" button.
4. In "Proxy list" dialog window press "Apply" button for saving changes.

**Note**

AllProxy supports "basic" and "digest" authentication for "HTTP" and "HTTP-WEB" proxy types. For more information see http://en.wikipedia.org/wiki/Digest_access_authentication

AllProxy supports next IP address formats:

- Dot-decimal notation: 192.0.2.235
- Dotted Hexadecimal: 0xC0.0x00.0x02.0xEB
- Dotted Octal: 0300.0000.0002.0353
- Hexadecimal: 0xC00002EB
- Decimal: 3221226219
- Octal: 030000001353

HTTP and HTTP-WEB

- "HTTP-WEB" proxy type redirects only HTTP traffic, using "GET" queries. This proxy type suits for web browsers only. But for your convenient, when you establish connection on 443 or 563 port, traffic will be redirected through "http connect".
- "HTTP" proxy type redirects any traffic and uses "http connect" method.

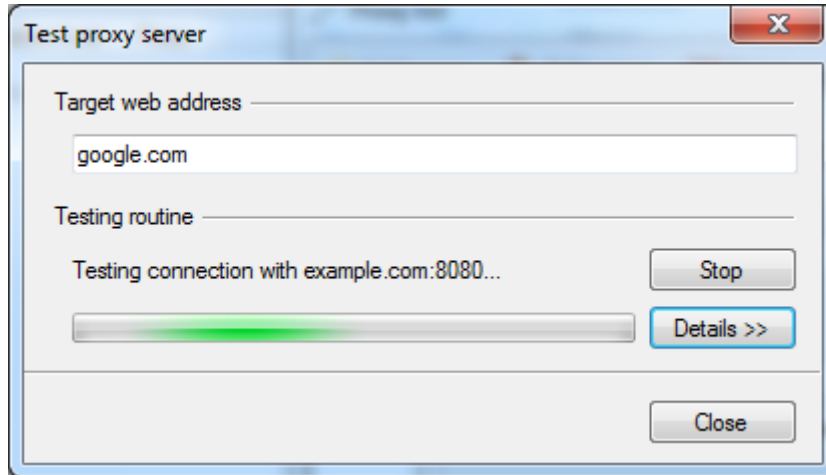
**Note**

The AllProxy redirects outgoing client connections only, that use WinSock over TCP transport protocol.



Testing proxy server

For convenience and simplicity of settings in AllProxy application the testing possibility of the specified proxy servers is realized. To sure that specified configuration is efficient, use "Test proxy" button, located in the left lower corner of the window. By default the AllProxy application will test connection to the "google.com" web-site, but you can choose any other.

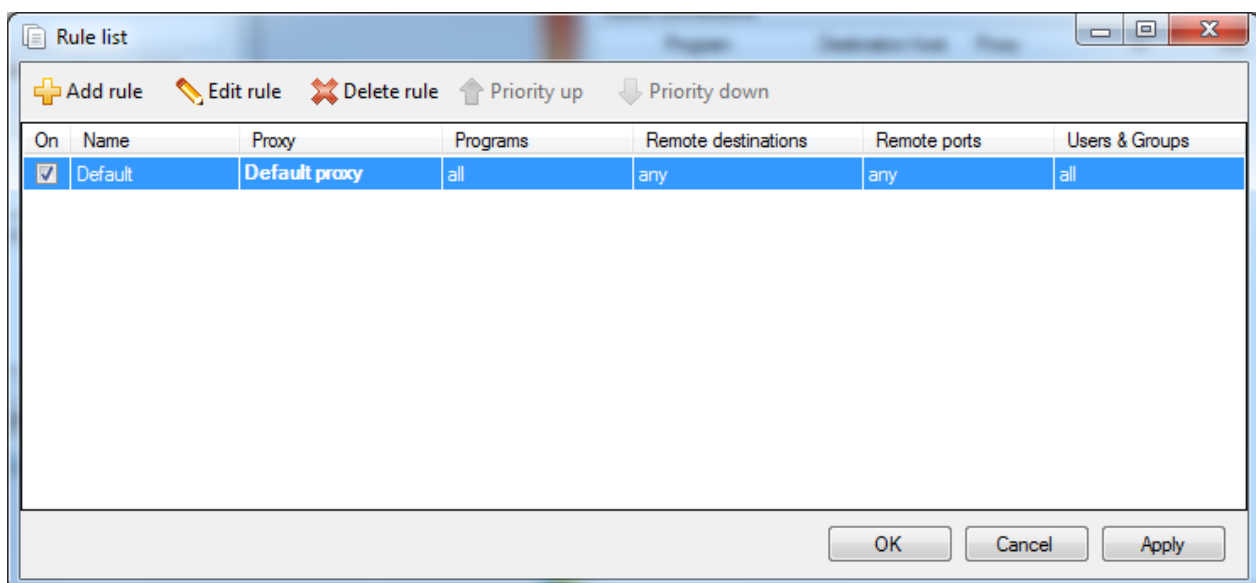


Note

It is necessary to receive exact customizations of a proxy server from your provider to access the "Internet", or from a network administrator.

Proxification rules managing

Here are basic operations for working with proxification settings. To manage proxification rules click "Manage rules" button in the main window. As a result the "Rule list" dialog window is opened.





For your convenience, initially there is a "Default" default rule added, which redirects all applications through the "Default proxy".



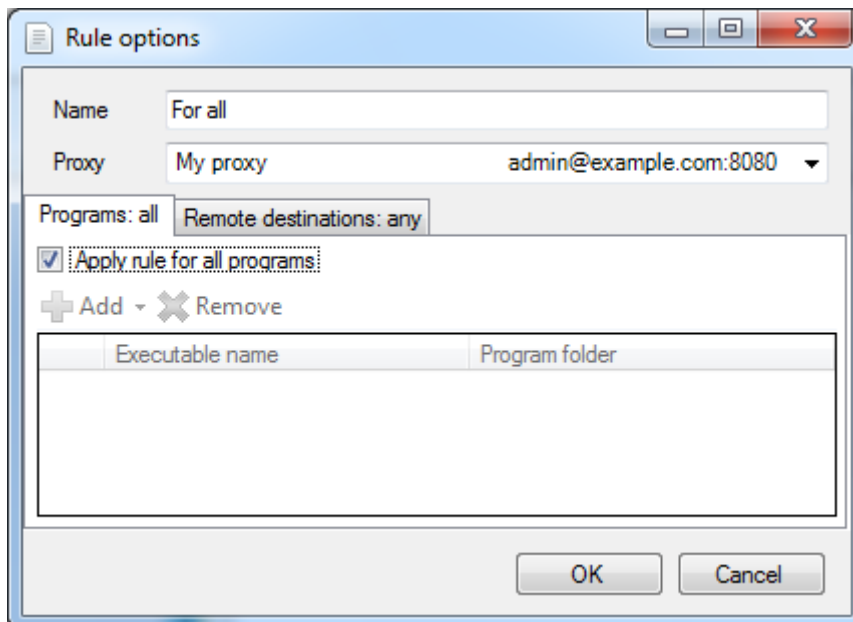
Warning

If a connection does not fit any rule, it will go directly!

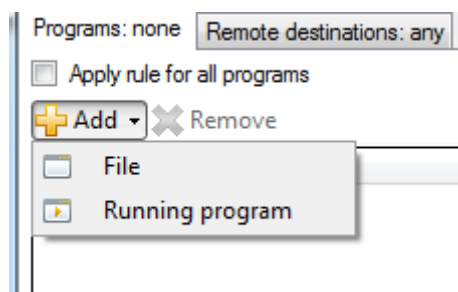
Adding rules

To add a new rule follow next steps:

1. Open "Add rule".
2. In appeared "Rule options" dialog box specify name of the rule, choose proxy server, which through the rule will be executed.



3. Choose applications, which will work under the rule. Unmark the "Apply rule for all programs" and press "Add" button. You can choose file or running program.



4. After you finished rule customization press "OK" button.
5. Do not forget to save changes by pressing "Apply" button in "Rule list" dialog window to complete creation process.



Note

As was said the order of layout of rules matters. At coincidence of conditions the rule will be applied, which the first has met in the list. The priority of units in the list decreases from top to down.

Editing rules

Every created rule could be easily edited using the same interface. To access editing interface in the "Rule list" dialog window select the rule you want to edit and click "Edit rule" icon.

After modifications of the proxification rule were made, please do not forget to save the common configuration of AllProxy application by pressing "Apply" button.

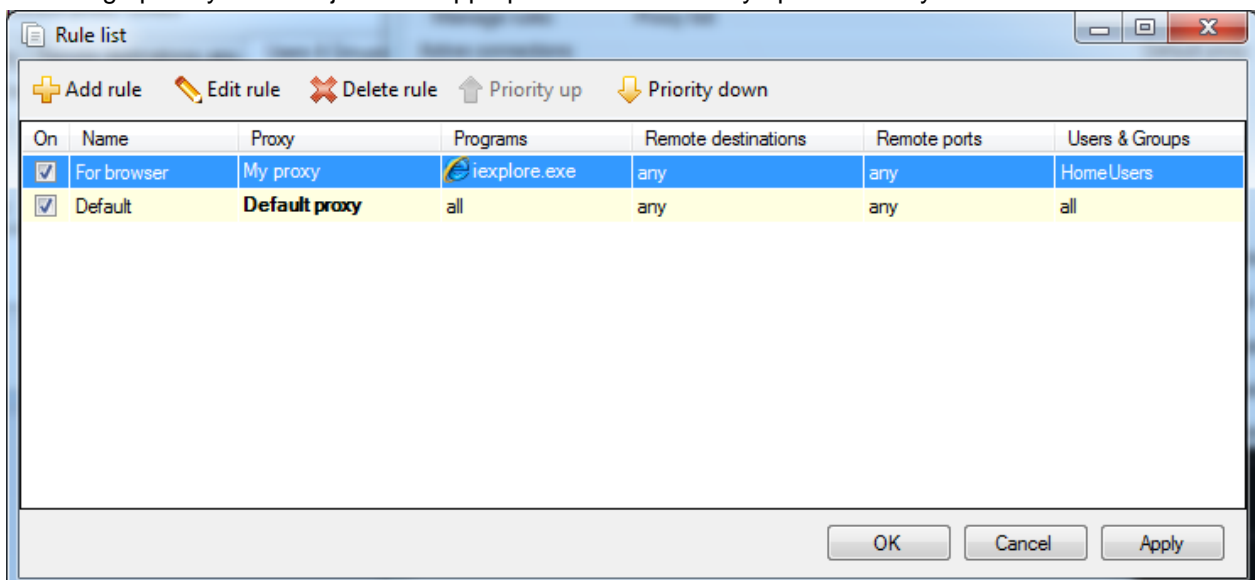
Deleting rules

To remove a rule select it and press "Delete" icon in the "Rule list" dialog window.

After removing of one or several rules, please do not forget to save the common configuration of AllProxy application by pressing "Apply" button.

Changing priority

To change priority of a rule just click appropriate button "Priority up" or "Priority down".





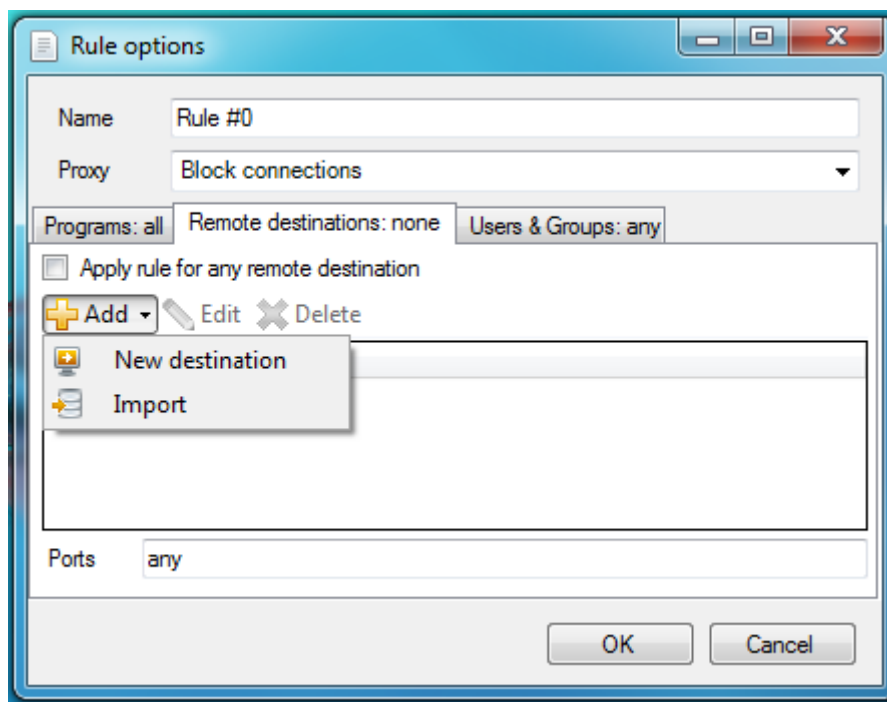
Note

Press "Apply" button for saving changes in "Rule list" dialog window. If you want to apply the rule for all programs select "Apply rule for all programs" mark.

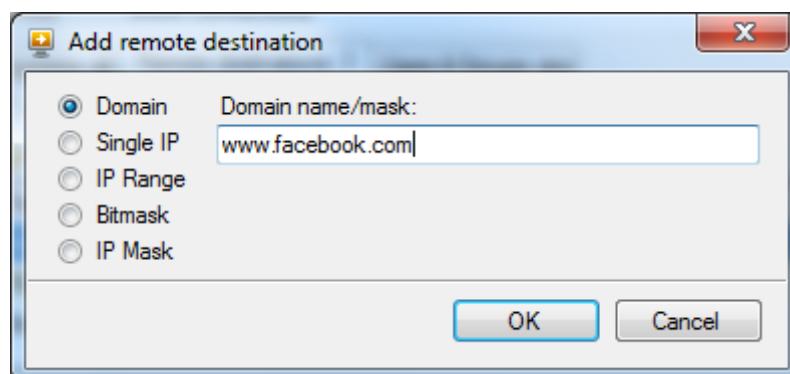
Setting Remote Addresses

The AllProxy allows setting concrete addresses in the "Internet" to be proxified:

1. Open "Rule options" dialog window.
2. Select "Remote destinations" tab.

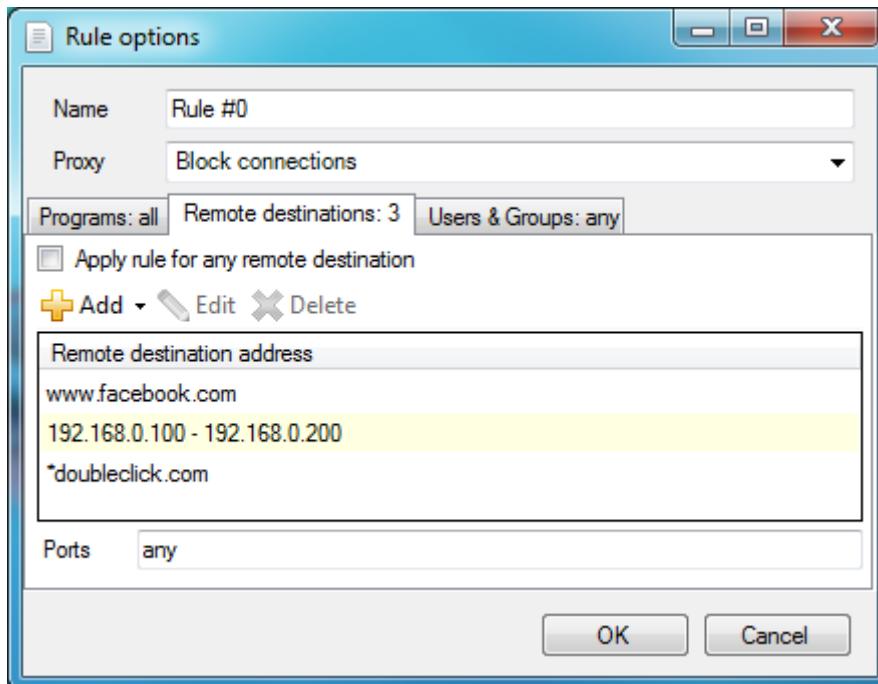


3. Click "Add" and select "New destination" item to add remote address.





4. In appeared dialog window you can specify: domain, single IP, IP range, IP/mask and IP and subnet mask of the remote hosts. After you enter appropriate remote address, click "OK" button.



5. Do not forget to click "Apply" button to save changes.

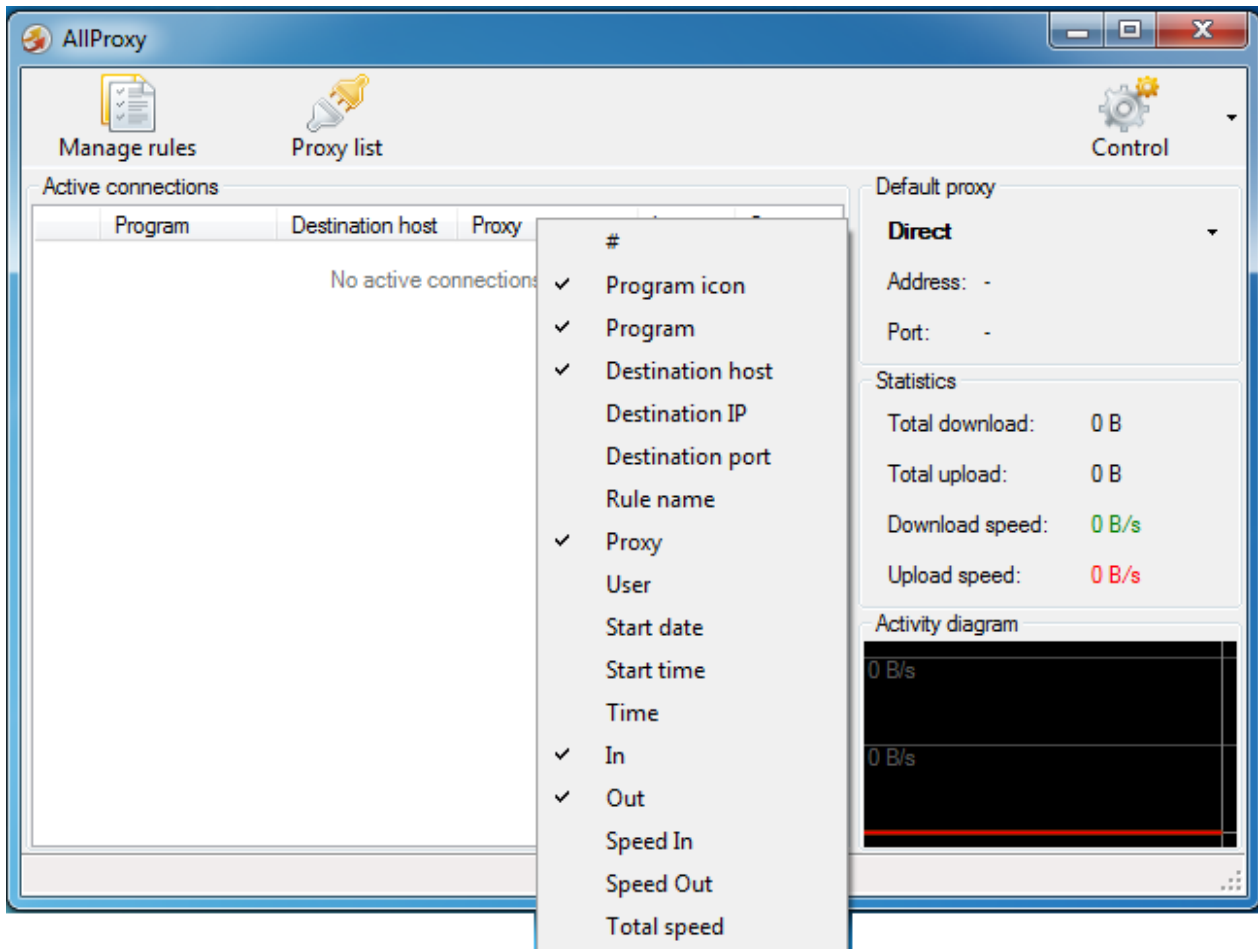


Note

Also, you can configure the given settings so that calls to all addresses were routed to networks "Internet" through the specified proxy server. For this purpose select the "Apply rule for any remote destination" mark.

Columns customization

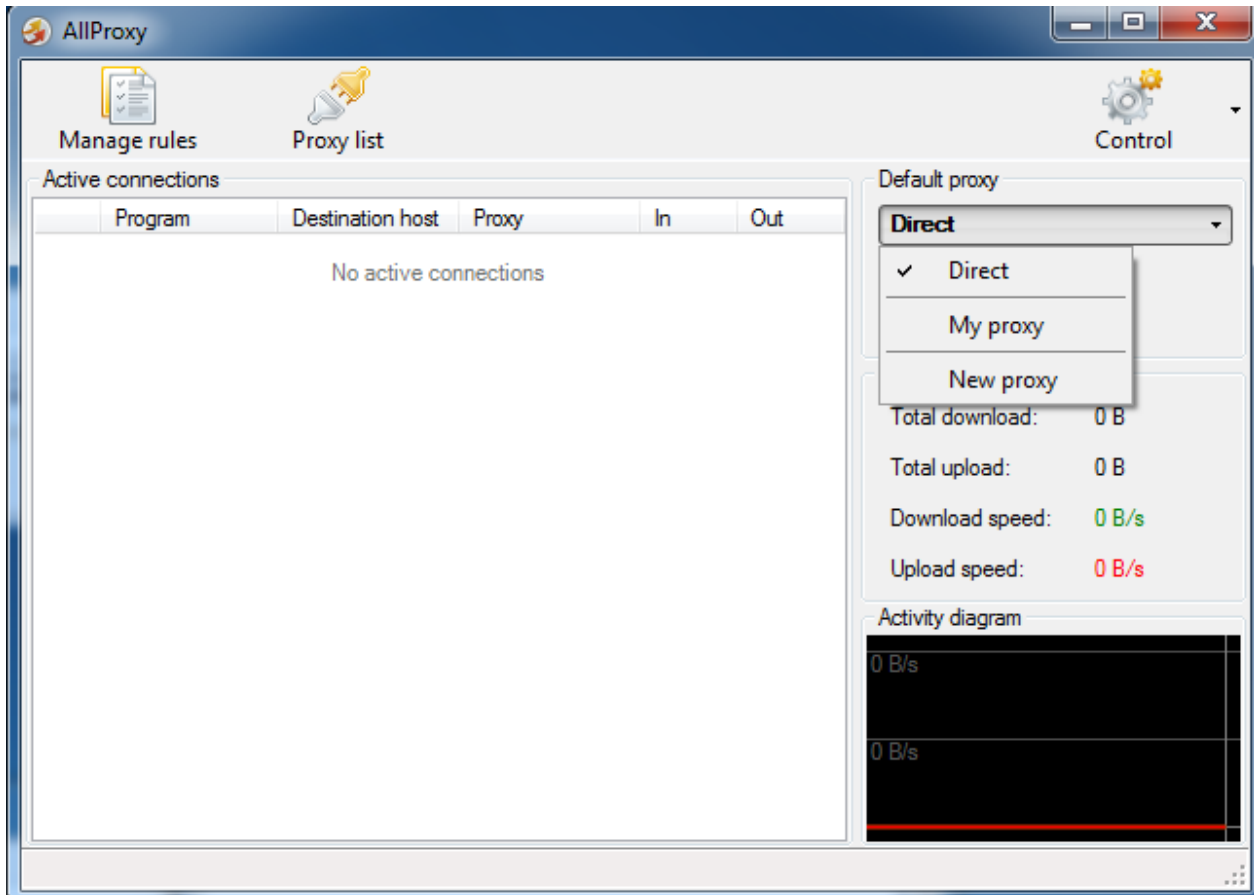
You can easily configure AllProxy main window by customizing columns. Just right click on the table and mark columns you want to see on the main window.



Using this feature you can also observe active connections established by other Windows Users, by enabling "User" column.

Default proxy

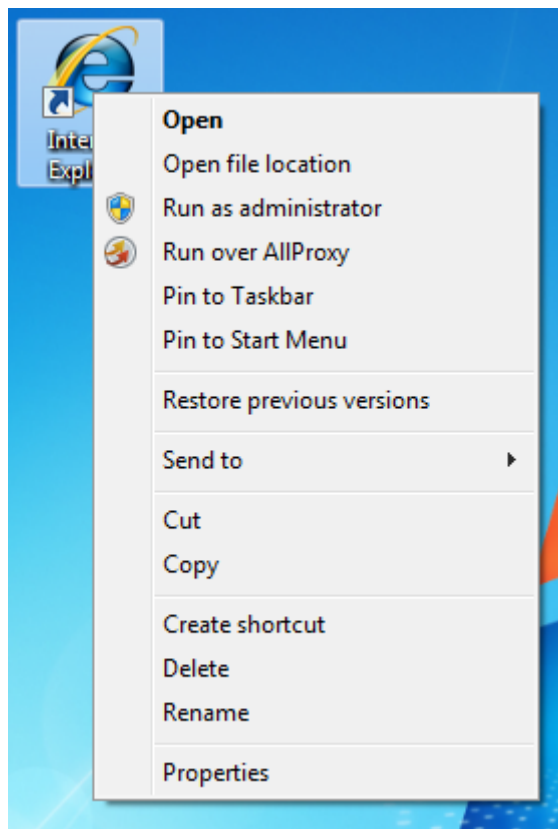
You can easily switch default proxy from the AllProxy main window. Just click on the name of current default proxy and choose another.



Forced proxification

You can also use "Forced proxification" feature.

1. Choose any program on your desktop or any other place.
2. Press right mouse button.
3. In appeared context menu select "Run over AllProxy".



Note

This feature runs program through a default proxy, specified in the AllProxy, and ignores all rules specified in "Rule list". This operation does not create any rule in "Rule list" and it is one-time process until the executable program won't be closed.

Settings Management

You can find all available settings in "Control" menu and "Settings" submenu.

Control menu



Enable/Disable proxification

Turn the proxification on/off

Import configuration...

Import AllProxy configuration from file

Export configuration...

Save current AllProxy configuration to file (.xml format)

Settings...

Open "Settings" dialog window

Help

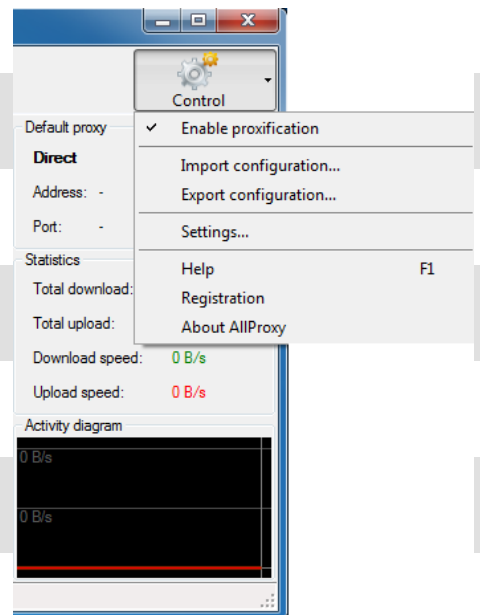
Open help

Registration

Open registration dialog

About AllProxy

Open AllProxy dialog window with general information



Settings

"Settings" dialog window contains 3 tabs:

- Main
- View
- Log

Main tab

Language

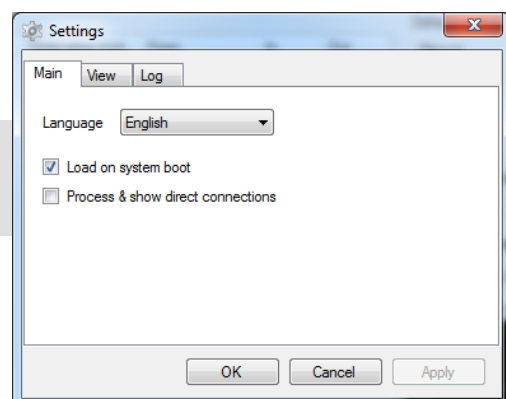
Set program language: english, russian

Load on system boot

Launch the AllProxy on computer start-up

Process & show direct connections

Process all direct connections and show them in the list of active connections. Thus, AllProxy will use additional computer resources.





Note

We are always glad to add new languages support in every our application to meet your wishes. If you want to help us in application localization you are always welcome to post your suggestions on our forum: <http://very-soft.com/forum> or send message to e-mail: support@very-soft.com

View tab

Advanced mode

Enables *Advanced mode*

Tray icon animation

Animate AllProxy tray icon

Autosize table columns

Autosize columns to fit table sizes

Hide extra tooltips

Hide all extra tooltips

Generate proxy names

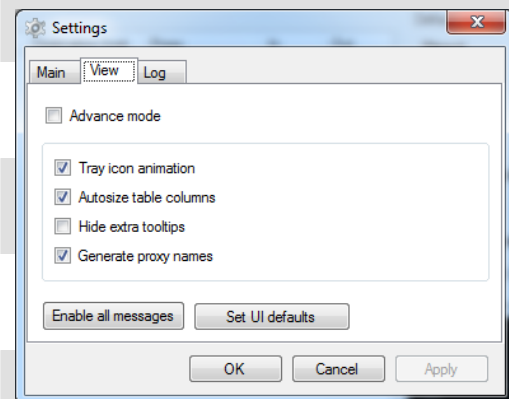
Generate name for each created proxy

Enable all messages

Show all dialog windows with questions

Set UI defaults

Restore windows' sizes and positions



Log tab

Path

Log file location

Log level

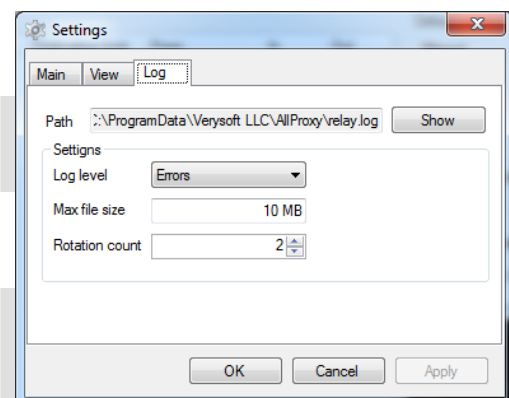
Specify log level

Max file size

Maximum log file size

Rotation count

Number of log files. If it is reached, log files will be rewritten in cycle

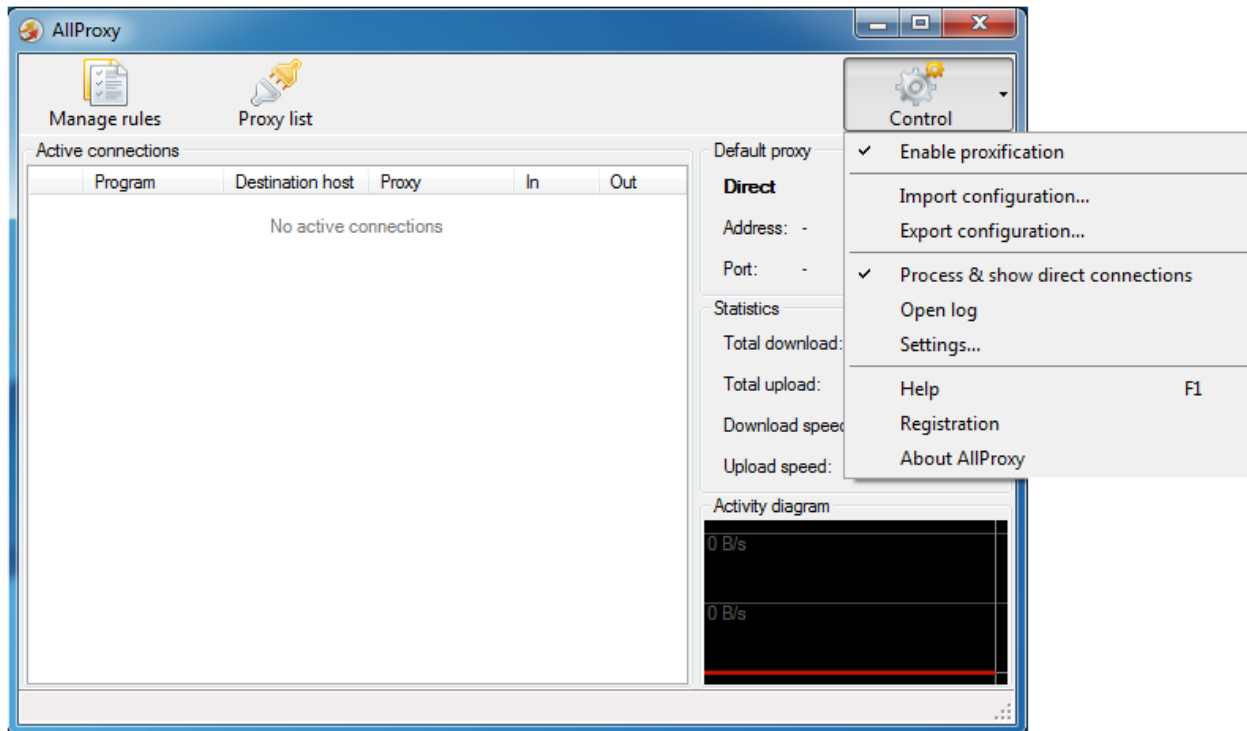




Advanced mode

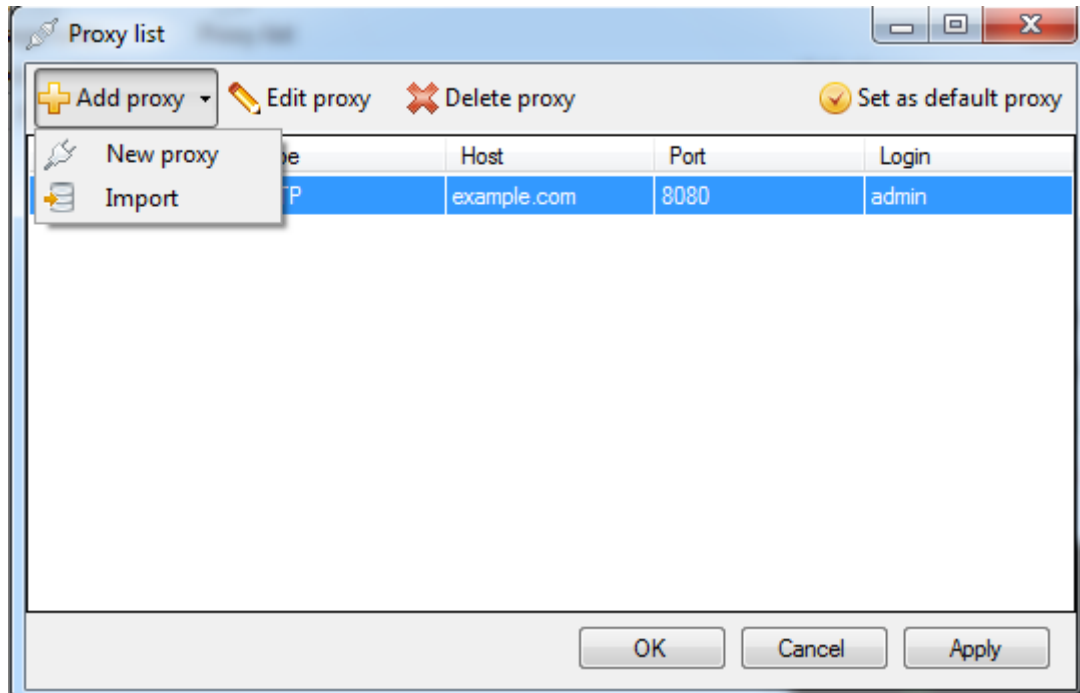
All AllProxy advanced features are hidden by default.

1. "Process & show direct connections" and "Open log" in "Control" menu. First option allows processing and showing direct connections and last - opening log file.

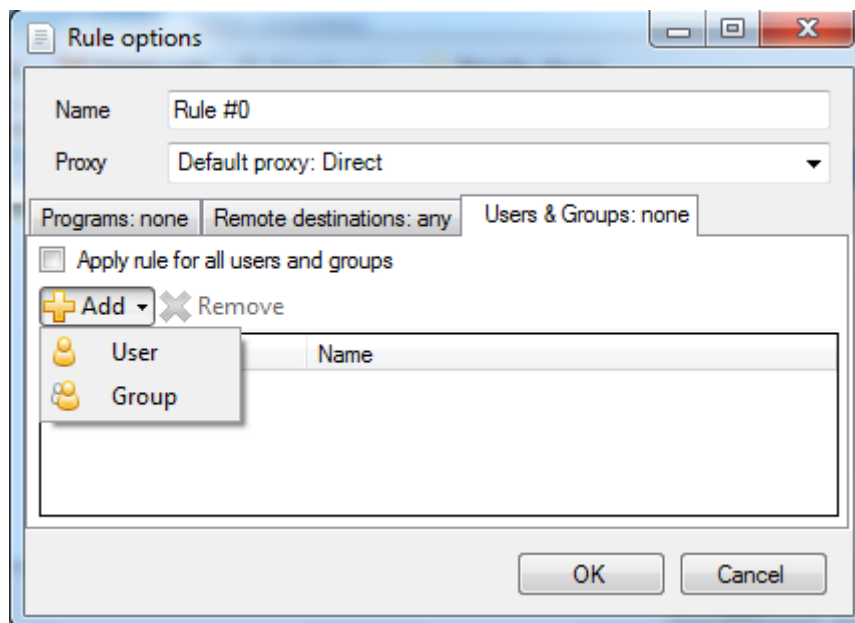


2. "Import" proxy in "Proxy list". You can import proxies from files, buffer, sites, etc., by drag-and-drop. Next proxy list formats supported:

```
HTTP example.com:8080
HTTP example.com 8080
example.com 8080 HTTP
example.com:8080 HTTP
http://example.com:8080
```

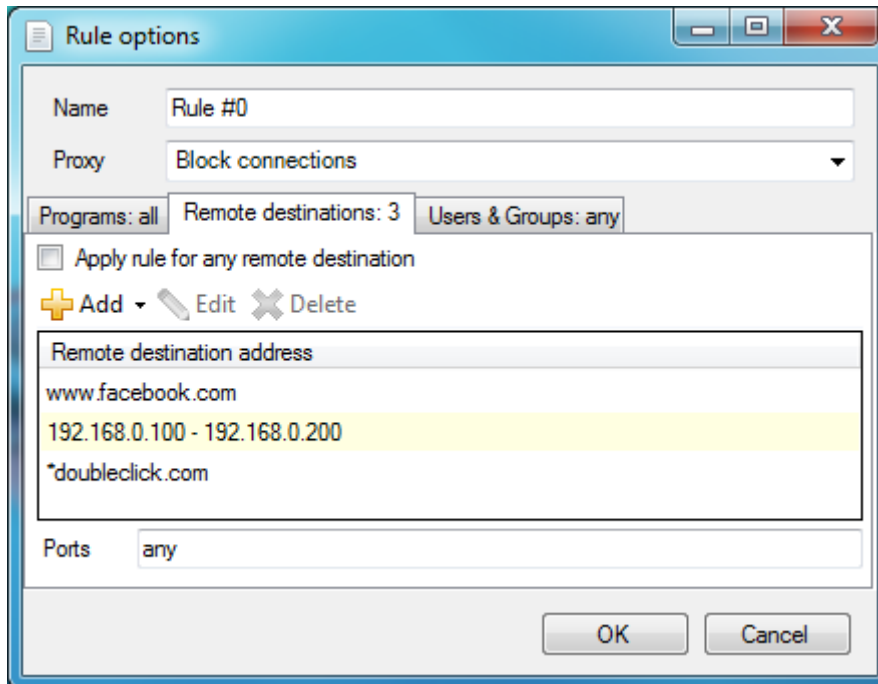


3. Users&Groups tab in "Rule options" dialog. You can specify exact users/groups which connections will be proxified.








4. Import remote addresses on "Remote destinations" tab. You can import remote addresses from files or by drag-and-drop (IP, IP range and IP/mask currently supported). This list should be in plain-text:

```
192.168.0.100
192.168.0.101-192.168.0.150
192.168.0.1/24
```



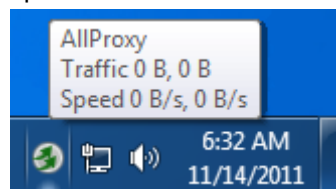
Indications and Notations

AllProxy application can inform you about current state and functionality.

- When the application is completely efficient and functioning in a regular mode, you'll see  associated icon of the AllProxy Tray application in the notification area.
- When the proxification is turned off or program unexpectedly quited, you'll see  AllProxy Tray icon.
- When one of required components is not functioning, the AllProxy will let you know about it with the appropriate text message and next icon .
- When the "Tray icon animation" option is turned on and there are active connections, you'll see next AllProxy Tray icons:  - sending data,  - receiving data.

AllProxy Tray pop-up notification

If you navigate on the AllProxy Tray icon, in pop-up notification you can observe current information: traffic - input and output, speed - input and output.





Trial Mode Limitations

Trial version of the AllProxy has couple of limitations that are applied only to unregistered copy of the application.

They are as follows:

- Remote destinations tab is not available.



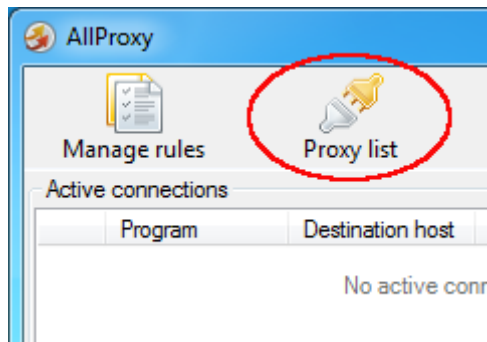
Warning

Trial version is limited to 15 days. After it expires, please, register to continue using the AllProxy.

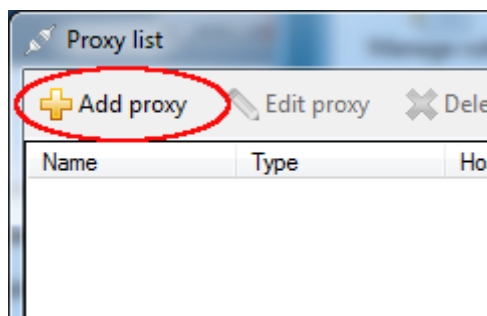
How to

How to add new proxy?

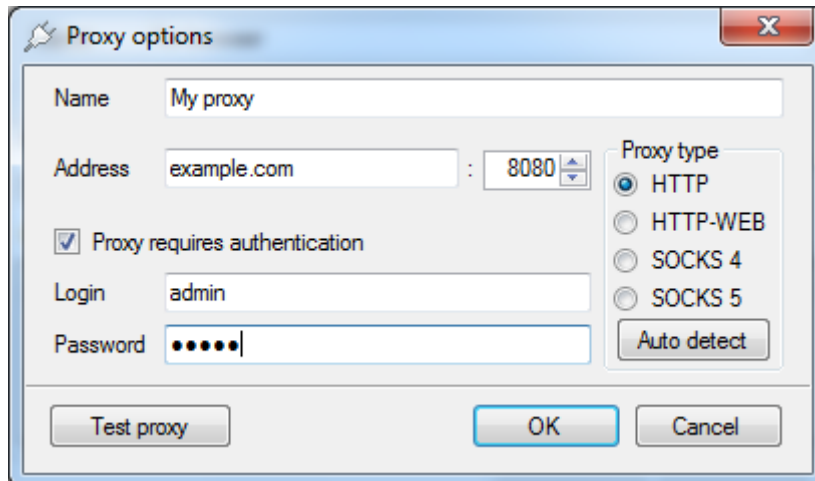
1. Click "Proxy list" icon in main window.



2. Click "Add proxy" icon.



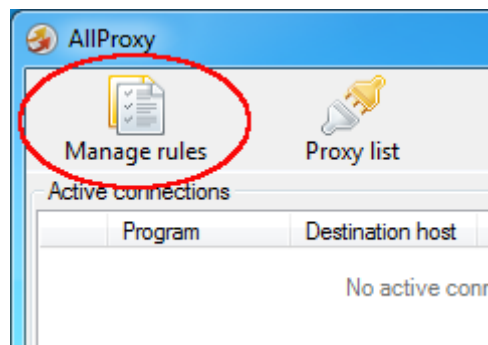
3. Specify new proxy's name, address, port, type. If the proxy server requires authentication, mark "Proxy requires authentication" and enter your login and password.



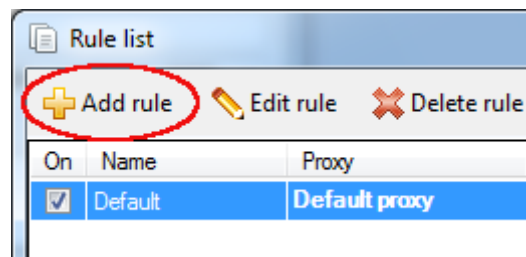
4. Click "OK" button.
5. Click "Apply" button in "Proxy list" window to save changes.

How to add new rule for all applications?

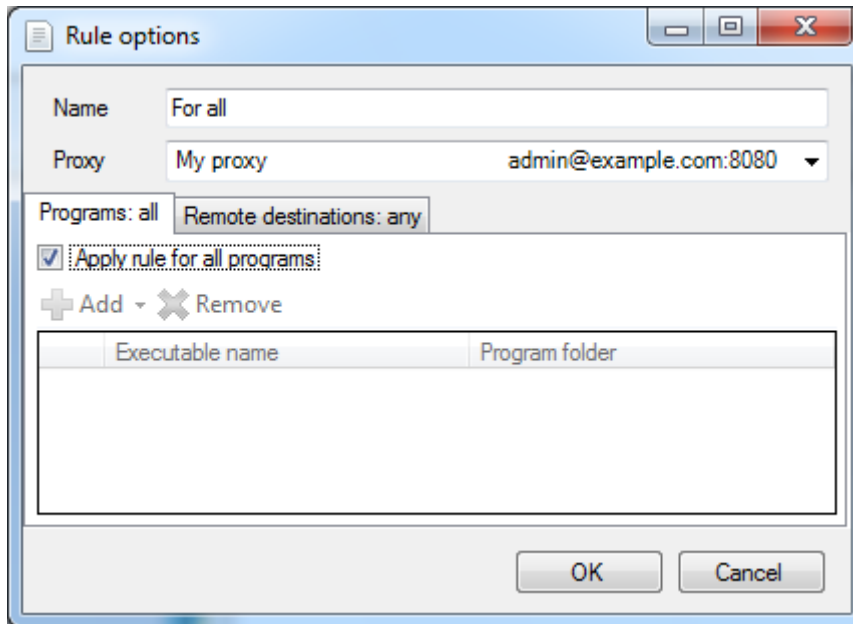
1. Click "Manage rules" icon in main window.



2. Click "Add rule" button.



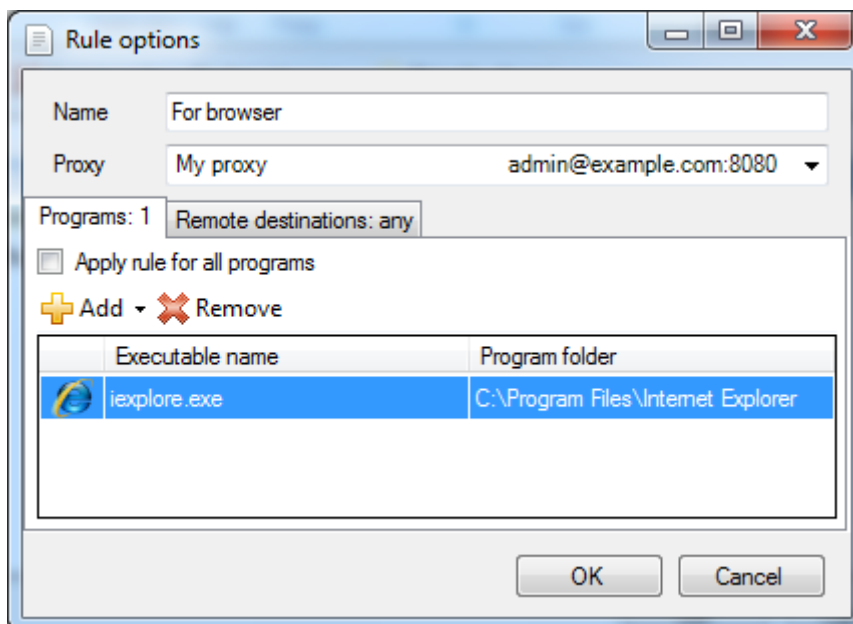
3. Specify rule's name, proxy server, which through it'll be performed, and mark "Apply rule for all programs".



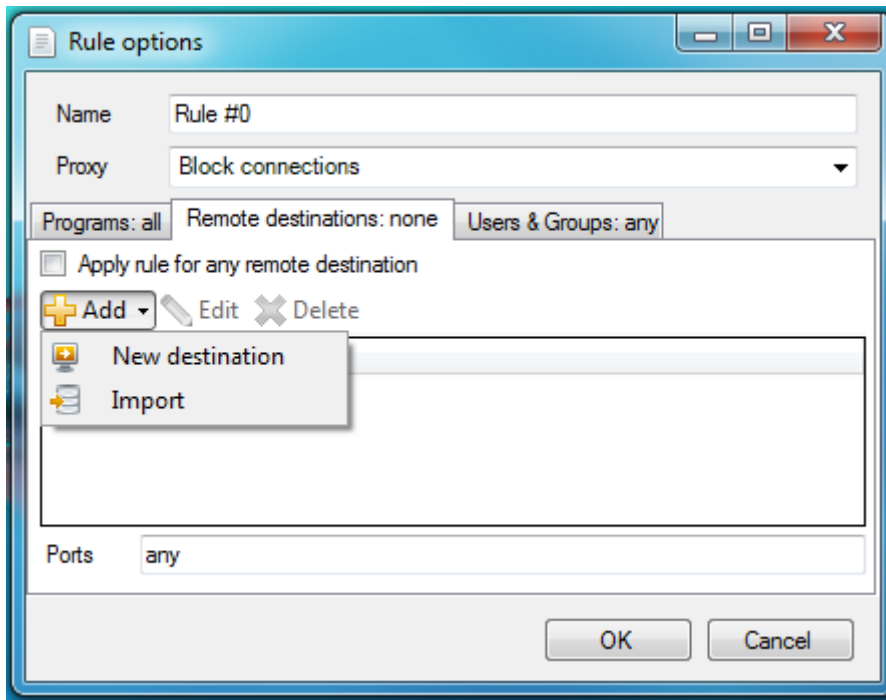
4. Click "OK" button.
5. Click "Apply" button in "Rule list" window to save changes.

How to add new remote destination address for my browser?

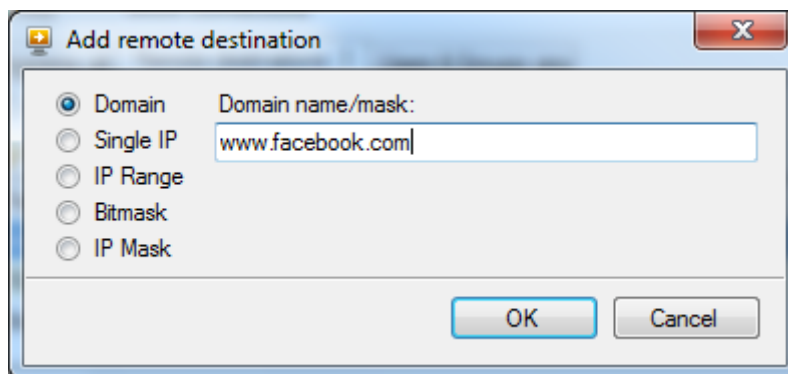
1. Create a new rule.
2. On "Programs" tab click "Add" icon. You can choose file or running program.



3. In appeared dialog window select your browser execute file.
4. Click "OK" button.
5. Select "Remote destinations" tab in "Rule options" window.



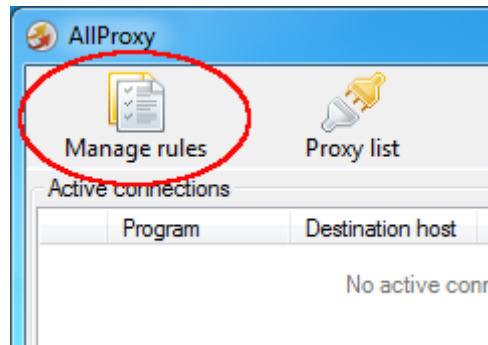
6. Click "Add item" icon.
7. In appeared dialog window select appropriate remote address and enter it.



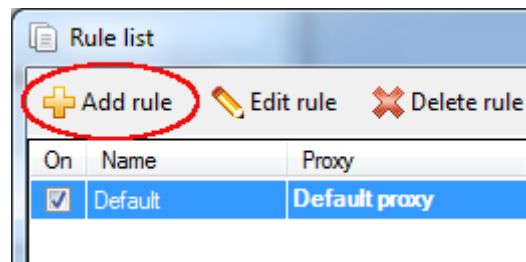
8. Click "OK" button.
9. Click "OK" button in "Rule options" window.
10. Click "Apply" button in "Rule list" window to save changes.

How to set exception from proxification?

1. Click "Manage rules" icon in main window.

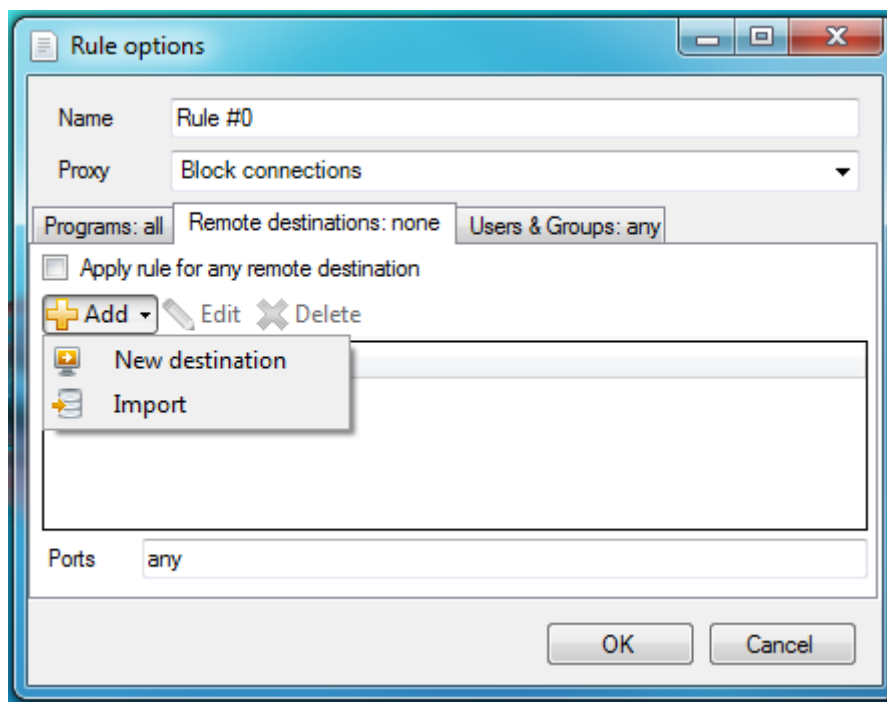


2. Click "Add rule" button.



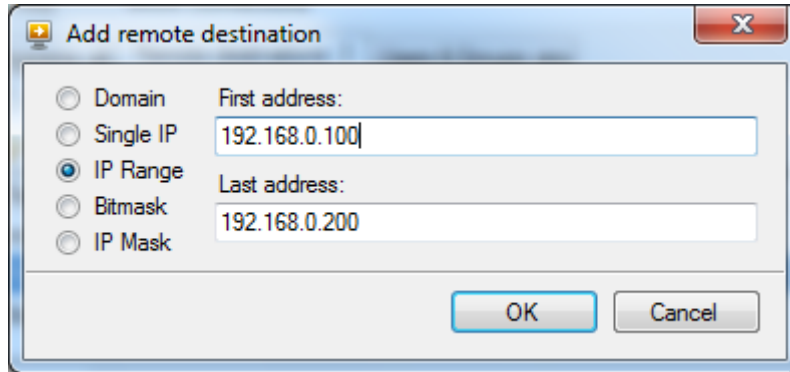
3. Enter rule name and select "Block connections" as proxy.

4. Select "Remote destinations" tab and click "Add" button.



5. Click "New destination" item.

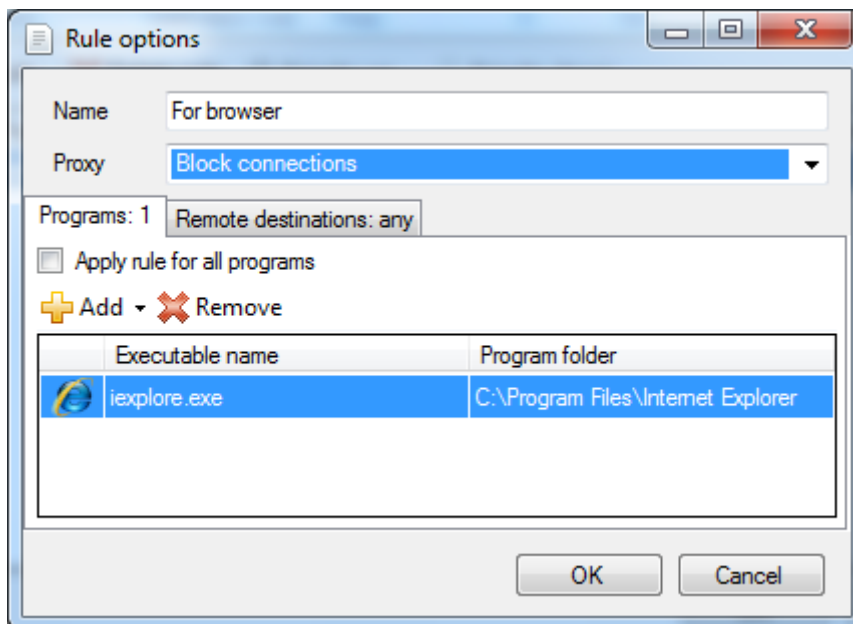
6. In appeared dialog window select the "IP Range" and enter first and last addresses of local network.



7. Click "OK" button.
8. Click "OK" button.
9. Click "Apply" button to save changes.

How to block applications?

1. Create a new rule.
2. Specify "Blocking" in name field and select "Block Connections" as a proxy.



3. Specify applications to be blocked.
4. Click "Apply" button.

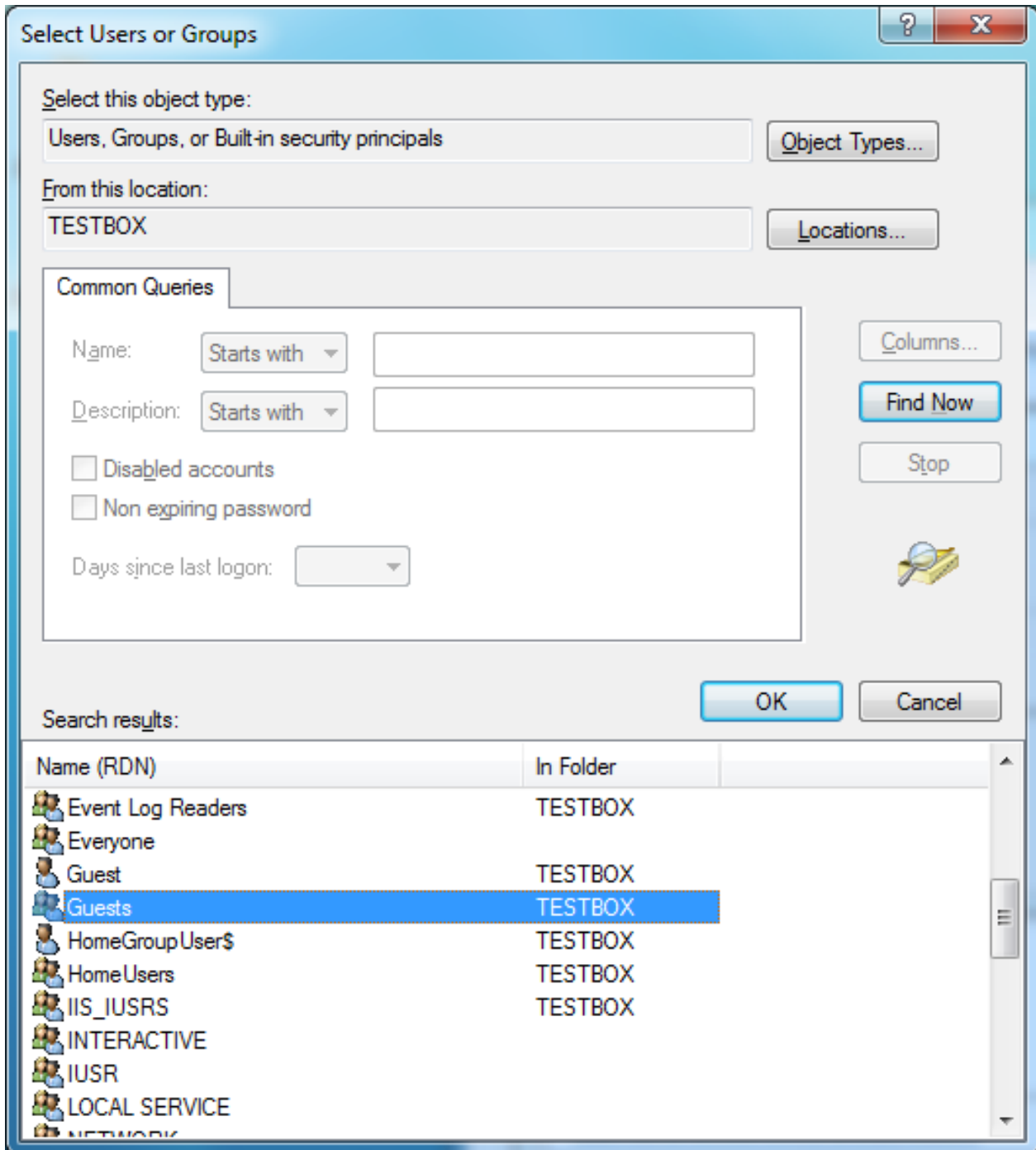
**Warning**

AllProxy blocks connections that use only WinSock over TCP transport protocol.

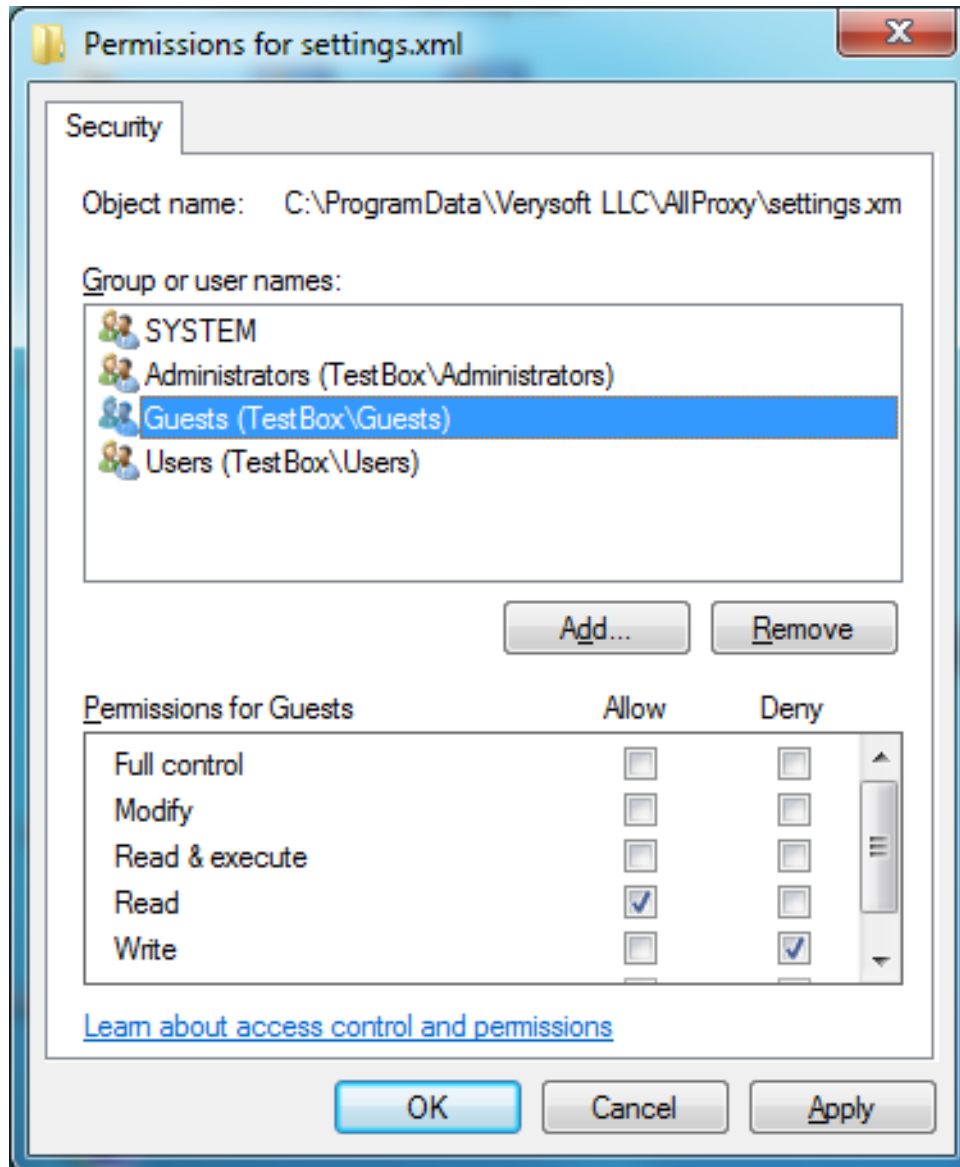
How to deny changing configuration to Windows User?

So, if you want to deny changing AllProxy configuration to, for example "Guests" group, perform next steps:

1. Enter "C:\ProgramData\Verysoft LLC\AllProxy\" directory.
2. Right-click on "settings.xml" file and select "Properties".
3. In appeared window select "Security" tab and click "Add" button.
4. In appeared window click "Find now" button and select "Guests" group in the list below.



5. Click "OK" button, then select "Guests" in the list and mark "Deny" against "Write" in "Permissions for Guests", as shown below:



6. Click "OK" button. Now all users from "Guests" group cannot change AllProxy configuration.

Firewall Compatibility

In case, when you have installed or built-in firewall application on your computer, you should properly adjust firewall settings in order to use all functions of the AllProxy.

1. Open your firewall and allow "AllProxyService.exe" and "AllProxyUI.exe" applications performing outgoing TCP connections.
2. Then allow "AllProxyService.exe" application accepting incoming and outgoing connections on the [loopback](#) (127.0.0.1).



Troubleshooting

Can't transfer files

It is possible that you could not transfer any files through ICQ or MIRC applications (if they are proxified), because their connections would go through the AllProxy, which will masquerade IP and port of the sender.

Can't enter FTP server

Probably, you need to change type of access in application from **active** to **passive**.

Can't speak through VoIP

Probably, you need **SOCKS5** type of a proxy server for SIP telephony.

Nod32 compatibility

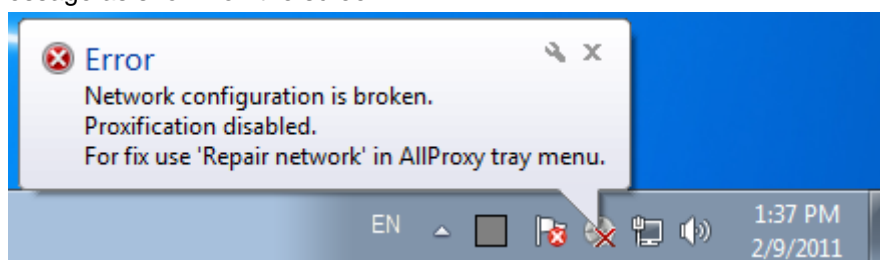
The AllProxy might work incorrect with Nod32 application, if the "Process & show direct connections" option is turned on.

There are two ways to solve the problem:

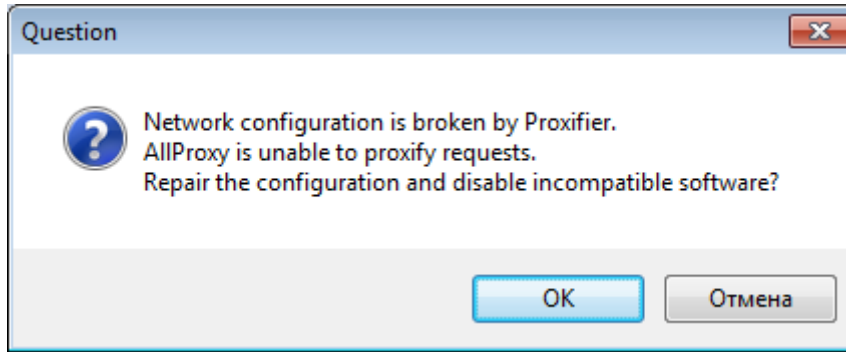
1. Set direct connection for "ekrn.exe" application and turn off the "Process & show direct connections" option;
2. Enter Nod32 configuration (F5), select "HTTP, HTTPS" item on the left side of the window, select "Web-browsers" and unmark **AllProxyService.exe** application. But you need to understand that if you'll use this approach, Nod32 won't protect you computer properly!

Broken network connection

If you have a message as shown on the screen:



It means that your network connection was broken. Just double click on the AllProxy icon, answer the question.



License key was not added to registry

1. Probably you do not have enough access rights on file with the license key. Please, refer to your system administrator to solve this problem.
2. Probably you have specified file with the license key located in network. Please, copy it to your local computer and specify it again.

Unable to fix network configuration

There are many different cases for such situation. Please, contact with our support to solve the problem.

AllProxy End User License Agreement

PLEASE, READ THIS LICANSE AGREEMENT CAREFULLY.

This End User License Agreement ("EULA") is a legal agreement between you (either an individual or a single entity) and Verysoft, LLC. This EULA covers all existing versions of AllProxy software: AllProxy, AllProxy Lite and AllProxy Pro and their beta and demo-versions of the software from now on referred below as "PRODUCT" unless otherwise specified.

This PRODUCT is shareware (TRY before you BUY). This means:

1. All rights on this PRODUCT are exclusively owned by Verysoft, LLC. Verysoft, LLC reserves all rights not expressly granted to you in this EULA.
2. The PRODUCT is protected by copyright and other intellectual property laws and treaties. Verysoft, LLC owns the PRODUCT title, PRODUCT content, copyright, and other intellectual property rights in the PRODUCT excepting third-party software products and modules included in the PRODUCT, if any. The PRODUCT is licensed, not sold.
3. This PRODUCT is distributed "AS IS". No warranty of any kind is expressed or implied. You use it at your own risk. The author won't be liable for data loss, damages, loss of profits or any other kinds of loss while using or missusing this PRODUCT.
4. You must not emulate, clone, rent, lease, sell, modify, decompile, disassemble and reverse engineer the PRODUCT. Any attempt of unauthorized usage will result in immediate and automatic termination of this EULA and may result in criminal and/or civil prosecution. All rights not expressly granted here are reserved by Verysoft, LLC.
5. Installing, copying, loading and otherwise using this software signifies the acceptance of the all terms of this EULA and conditions.



6. If you do not agree with the terms and conditions of this EULA you must remove installed software and all its files from your storage devices and cease to use the PRODUCT.
7. "COMPUTER" term in this EULA represents either electronic equipment itself if it is serving as a separate computing individual or computer system (mainframe) in the part computer belongs to.
8. This license agreement with end-user (including all supplements and modifications, that deliver with software) is full legal agreement between you and Verysoft, LLC about mentioned in this EULA PRODUCTS and commute for all previous and current oral and written statements, announcements, suggestions and declarations concerning licensed software. If any of clause in current agreement become void, impracticable or unlawful, all the rest of clauses are in force legal.
 - If you already register PRODUCT, please, refer the section A. "FOR REGISTERED USERS".
 - If you use unregistered version of PRODUCT, please, refer the section B. "FOR UNREGISTERED USERS".

A. "FOR REGISTERED USERS"

A.1. After PRODUCT registration Verysoft, LLC gives you the "Activation code". "Activation code" incarnates the right to use with one version of the licensed software under the conditions listed in this EULA.

A.2. Once registered, the user is granted a non-exclusive, transferable single license for any legal purposes, without right on sub-license, to use this PRODUCT in accordance with this EULA and any other written agreement with Verysoft. Single copy of the license gives you the right to use PRODUCT ONLY ON THE ONE COMPUTER IN CURRENT HARDWARE CONFIGURATION. CURRENT HARDWARE CONFIGURATION means that program uses for internal needs information about your MOTHERBOARD, PROCESSOR and HARD DRIVE. If you change any of listed part you may need to reactivate "Activation code". For code reactivation process you should contact Verysoft Support Team with description of key unacceptability reasons. In any case "Activation code" can be exchanged free of charge not more than 2 times in a half of a year. Otherwise you should order "License for Extra Service".

A.3. License itself and software can't be leased or rent, but can be granted to third-party individuals (parties) for constant use if they accept all terms of this agreement.

A.4. "License for Extra Service" includes fixed amount of "Activation code(s)" and consultation(s) from Verysoft Support Team about "Activation code" usage.

A.5. "License for Extra Service" granted only as an additional option to a main registration and can't be used for ordering a new licenses. Any attempt of unauthorized licensing will result in immediate and automatic termination of all agreements and "Activation codes" belongs to user will be deprecated.

B. "FOR UNREGISTERED USERS"

B.1. Anyone may use unregistered limited version of this software during trial period. If you wish to have fully operable PRODUCT version, you must register.

B.2. The unregistered version of this PRODUCT may be freely distributed, provided the as non-modified distribution package. If the PRODUCT is an update version, the transfer must include this update and all the previous versions. None of person or company may charge a fee for the distribution of this PRODUCT without written permission from the copyright holder.

Thank you for using our Software Products.

Verysoft, LLC

<http://very-soft.com>

contact@very-soft.com

support@very-soft.com